



**Garments**

Hira Bhaban, 2, West Chowdhurypara, Hazipara, Dhaka-1219, Bangladesh  
Tel- 02-9350006 E-mail: [info@outlinebd.com](mailto:info@outlinebd.com)

---

**Factory address** : **Outline Garments**  
Hira Bhaban, 2, West Chowdhurypara, Hazipara,  
Dhaka-1219, Bangladesh Tel- 02-9350006 E-mail: [info@outlinebd.com](mailto:info@outlinebd.com)

**Outline Garments**, is one of the leading exports (foreign & local) oriented woven or knit garments manufacturers and exporters in Bangladesh, situated in Chowdhurypara, Hazipara, Rampura, Dhaka. Locally we have a very good source for arranging the local fabrics and accessories so that we can keep buyer "on time delivery and maintain standard quality".

We are specialized in Bag, Apron, T-Shirt & well as fashionable customaries garments. We have an experienced and hard working sales and procurement team, which can provide you with a complete service supplying you the garments on a package basis at reasonable price.

We Outline Garments believe that we can provide the best service whatever you are looking for long days. We have been in operation since 2016. Buyer's samples and new design development are always welcome. Strict quality control, competitive prices and prompt delivery are guaranteed.

#### **Our Goal**

A goal is a desired result system visualizes plans and commits to achieve an organizational desired end-point in some sort of development. We are driven by a sole motivating force. An ideal which is to give priority to our customers, harness the best available resources and finally hold the mark of a leader in the Garments trade. To accomplish a goal one needs a mission, with us its continuous follow-up of efforts to ensure total customer satisfaction.

#### **Our mission**

Our mission is to use top quality fabrics & accessories for making of garments by practicing advanced technology in production processes to attain superior customer satisfaction and maintain excellence.

#### **Our vision**

Our vision is to become a leader as a dependable and trend exporter (foreign & local) of garments in global fashion business by;

- Strictly following the latest fashion trends and industry needs
- Offering world class products using advanced technologies
- and always adhering to on time deliveries

#### **Our core values**

Our core values are built on superior customer satisfaction principles we strive to achieve every day by day maintaining;

- Fashion sensibility
- Service quality
- Corporate dignity and reliability
- Legal, ethical, social and environmental responsibility
- Personal sincerity
- and latest technology



Garments

Hira Bhaban, 2, West Chowdhurypara, Hazipara, Dhaka-1219, Bangladesh  
Tel- 02-9350006 E-mail : [info@outlinebd.com](mailto:info@outlinebd.com)

---

**No Child Labor:**

As mentioned above no one under the legal age of 18 years is employed by the company. We whole heartedly support and affirm the National and international Convention and Programs for Children's Right.

**Quality Assurance:**

It is not only about the production of quality products, it is about the total quality of business that transforms the needs to satisfaction. That's why we keep trying to improve customer satisfaction through reliability by always putting full emphasis on quality.

"Our quality approach is based on continuous improvement of performance which is from well-controlled procurement stage to the on-time deliveries of top quality Accessories."

The quality of our business together with the satisfaction of our customers is our main concerns. We attain and maintain our reputable, quality business by:

1. Strictly complying to our customers' guidelines and requirements
2. Taking advantages of the latest technologies
3. Emphasizing on preventions as well as inspection
4. Always working with Total Quality Management principles
5. Never missing the delivery schedules
6. Continuously improving safety levels of products and working environments
7. Having in-house professional quality management team comprised of Quality Manager, Quality Assurance and Quality Inspectors
8. Putting research and development activities into the core of our business
9. Always trying to think from customers' point of view
10. Always striving for excellence



Garments

Hira Bhaban, 2, West Chowdhurypara, Hazipara, Dhaka-1219, Bangladesh  
Tel- 02-9350006 E-mail: [info@outlinebd.com](mailto:info@outlinebd.com)

---

**Factory File:**

Name of Unit : Outline Garments

Type of Project : Export Oriented (Foreign & Local).

Factory Address : Hira Bhaban, 2, West Chowdhurypara, Hazipara, Dhaka-1219, Bangladesh

Contact Details : A.S.M. Anowarul Islam (Managing Partner)  
E-Mail: [sirripon@outlinebd.com](mailto:sirripon@outlinebd.com)

Engr. A.S.M. Rofiqul Islam (Chairman Partner)  
E-Mail: [engrrafiq@outlinebd.com](mailto:engrrafiq@outlinebd.com)

Fara Ulfat Torsha (Communication & Sales)  
E-Mail: [faratorsha@outlinebd.com](mailto:faratorsha@outlinebd.com)

Nur-E-Alom (Factory Manager)  
E-Mail: [info@outlinebd.com](mailto:info@outlinebd.com)

Turnover : US Dollar 01 Million.

Employees : 100 Persons.

Established : January 2016

Factory Space : 4,500 Sqft.

Product Range : Bag & Apron, Uniform (Top & Bottom)

Capacity : 75,000 & 25,000 PCS per Month.



Garments

Hira Bhaban, 2, West Chowdhurypara, Hazipara, Dhaka-1219, Bangladesh  
Tel- 02-9350006 E-mail: [info@outlinebd.com](mailto:info@outlinebd.com)

**BUILDING & OTHER CIVIL CONSTRUCTIONS:**

The cost of Building and other civil constructions is as follows:

SL No	Items	Specifications	Rate/Sft	Cost Tk. In Tl.
01	02	03	04	05
01	Factory Buildings including Godown and Office	4500/Sft. On different specifications [In Heritance Property]	18/sft	81,000/-
	<b>Total:</b>			<b>81,000/-</b>

**MANAGEMENT AND ORGANIZATION:**

**THE PROMOTERS:**

The project has been promoted by the enlightened and experienced group of 02 (Two) persons residing at Chowdhurypara, Hazipara, Dhaka. They intend to set up a Woven & Knit Garments unit under financial assistance from any financial institution. A pre investment Feasibility report to this effect has been prepared about the project design, covering in details of its probable cost, profitability and other relevant aspects Especially the Chairman Partner and Managing Partner of the company have sufficient business / industrial experience in this line of products. It is expected that as the Chairman Partner and Managing partner have already gathered sufficient knowledge in this line of production system s well as the technology involved in it and marketing approach of the products it will be an extra plus point for managing the project. The management of the company will be vested with the Board of Directors of the company consisting of the following persons

Name & Address	Position	Share holdings
<b>01. Engr. A.S.M. Rafiqul Islam</b> S/o. Md. Eraduzzaman Date of Birth: September 22,1983 TIN: 149597365805 NID: 553 130 2007 E-Mail: <a href="mailto:engrrafiq@outlinebd.com">engrrafiq@outlinebd.com</a> Profession : Business, Nationality: Bangladeshi.	Chairman Partner	50%
<b>02. A.S.M. Anowarul Islam</b> S/o. Md. Eraduzzaman Date of Birth: February 01,1973 TIN: 652408102660 NID: 508 113 6565 E-Mail: <a href="mailto:sirripon@outlinebd.com">sirripon@outlinebd.com</a> Profession : Business, Nationality: Bangladeshi.	Managing Partner	50%
<b>Total:</b>		<b>100%</b>



Hira Bhaban, 2, West Chowdhurypara, Hazipara, Dhaka-1219, Bangladesh  
Tel- 02-9350006 E-mail: [info@outlinebd.com](mailto:info@outlinebd.com)

---

**CV OF**  
**Engr. A.S.M. Rafiqul Islam**

OWN NAME : Engr. A.S.M. Rafiqul Islam

FATHER'S NAME : Md. Eraduzzaman (Re. Gov.Service Holder)

MOTHER'S NAME : Late. Afroza Begum

PERMANENT ADDRESS : Hira Bhaban, 2, West Chowdhurypara,  
Hazipara, Dhaka-1219, Bangladesh

PRESENT ADDRESS : Hira Bhaban, 2, West Chowdhurypara,  
Hazipara, Dhaka-1219, Bangladesh

INDUSTRIALIST: : Engr. A.S.M. Rafiqul Islam  
Outline Garments (Chairman partner)  
Zoom International (Owner)  
NID : 553 130 2007  
Mobile : 01711522954

DATE OF BIRTH : 11, March 1968

RELIGION : Islam (Sunni)

EDUCATIONAL QUALIFICATION : B.S.C (Eng) , MBA

EXPERIENCE : Administration & Business 25 Years

Engr. A.S.M. Rafiqul Islam



Garments

Hira Bhaban, 2, West Chowdhurypara, Hazipara, Dhaka-1219, Bangladesh  
Tel- 02-9350006 E-mail: [info@outlinebd.com](mailto:info@outlinebd.com)

---

**CV OF**  
**A.S.M. Anowarul Islam**

OWN NAME : A.S.M. Anowarul Islam.

FATHER'S NAME : Md. Eraduzzaman (Re. Gov.Service Holder)

MOTHER'S NAME : Late. Afroza Begum)

PERMANENT ADDRESS : Hira Bhaban, 2, West Chowdhurypara,  
Hazipara, Dhaka-1219, Bangladesh

PRESENT ADDRESS : Hira Bhaban, 2, West Chowdhurypara,  
Hazipara, Dhaka-1219, Bangladesh

INDUSTRIALIST: : A.S.M. Anowarul Islam  
Outline Garments, ( Managing Partner)

Office & Factory: Hira Bhaban, 2, West  
Chowdhurypara, Hazipara, Dhaka-1219, Bangladesh

NID : 508 113 6565  
Mobile : 01711521780

DATE OF BIRTH : 01, February 1973

RELIGION : Islam (Sunni)

EDUCATIONAL QUALIFICATION : MBA Of Apparel Merchandising

EXPERIENCE : Garments Related Business 20 Years

A.S.M. Anowarul Islam Ripon



**Garments**

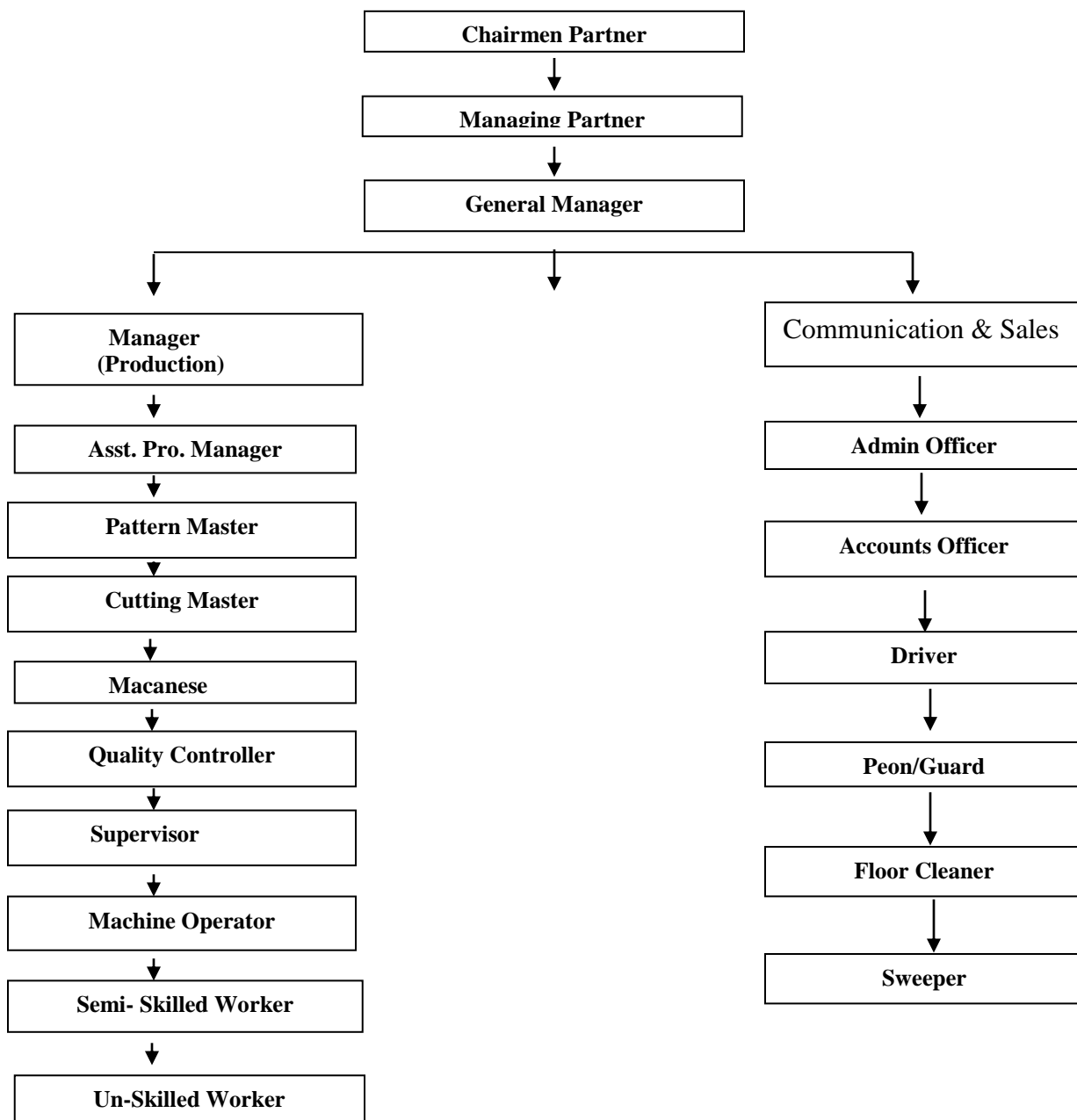
Hira Bhaban, 2, West Chowdhurypara, Hazipara, Dhaka-1219, Bangladesh  
Tel- 02-9350006 E-mail : [info@outlinebd.com](mailto:info@outlinebd.com)

**MANAGEMENT & ORGANIZATION:**

As the concern is a Proprietorship Concern, the overall management of the firm will under direct control and supervision of the proprietor. The proprietor would be the Chief Executive” Officer and will be assisted by other staffs in day to day operation the project. He will maintain regular liaison with all concerns related with.

The organization set-up of the project is shown over leaf:

**ORGANIZATION CHART**





Garments

Hira Bhaban, 2, West Chowdhurypara, Hazipara, Dhaka-1219, Bangladesh  
Tel- 02-9350006 E-mail : [info@outlinebd.com](mailto:info@outlinebd.com)

**FIXED COST OF THE PROJECT:**

SI No	Items of cost	Total Cost [Tk.]
01	Factory Buildings including Godown and Office 4,500/Sft. On different specifications <b>[RENTED-ADVANCED]</b>	14,58,000/-
02	Imported Machinery & equipment's (Local & Foreign)	48,95,000/-
03	Erection and Installation @ 5% on machinery.	12,14,000/-
04	Office furniture & equipment's, Decoration, Etc	3,35,000/-
05	Preliminary & start-up expenses, Licenses, Etc	1,60,000/-
	<b>Total fixed cost of the Project: Tk</b>	<b>80,62,000/-</b>

**BUYER LIST :**

1. GTS Apparel (HK) Limited
2. AUS Bangla Jutex Limited
3. International Trading

**PRODUCT:**

1. All Kind of Bag Woven & Non Woven
2. All kind of Apron
3. All Kind of Uniform ( Top & Bottom)
4. All kind of Bottom like Denim & Non Denim.

**SAMPLE & PRODUCT DEVELOPMENT CENTER**

Run by Fashion Merchandiser expert and equipped with required modern Machinery including automatic pocket bone machine.

**TECHNOLOGY & SYSTEM**

- # All hardware / software in place
- # E-Mail for communication with overseas and regional office
- # LAN Server and High performance computer
- # 24 hours video recording by CCTV Camera





Garments

Hira Bhaban, 2, West Chowdhurypara, Hazipara, Dhaka-1219, Bangladesh  
Tel- 02-9350006 E-mail : [info@outlinebd.com](mailto:info@outlinebd.com)

---

## **FULFILLMENT OF STANDARD REQUIREMENT**

Outline Garments promises are not only for our product and quality, we also want to be known for taking responsibility for our business. We are trying to create a better environment, better social and working condition in the country.

**CCTV System:** We have installed CCTV in our factory premises for developing our security system.

**House Keeping Team:** The factory has a house keeping team for maintaining neat and tidy environment and atmosphere in accordance with the privilege labor law.

**First Aid Box:** For every 07 workers we have a person trained in First Aid and Medicare. We keep certain quantity of Medicare of different type in a First Aid Box in each floor for employees to use as First Aid Box.

**Emergency Exits:** We have extra exit in all the floors for use by workers in case of any emergency situation.

**Fire Drills:** We have firefighting equipment in the factory as per Factory and Fire Service Act and in order to use them effectively as and when required.

**Waste Management's System:** We have a Waste Management's plant set up in a separate place outside the factory. This plant has different sections one section is meant for fabric wastes, another section is for papers and paper roll wastes and 3<sup>rd</sup> one is for wastes of polythene and similar type of other waste materials. This arrangement keeps the factory clean and hazard free.



Garments

Hira Bhaban, 2, West Chowdhurypara, Hazipara, Dhaka-1219, Bangladesh  
Tel- 02-9350006 E-mail : [info@outlinebd.com](mailto:info@outlinebd.com)

**Details of Machineries**

**CUTTING:**

<b><u>Name Of Machine :</u></b>	<b><u>Quantity :</u></b>
Cutting Machine	01 Pc
Hand Glove	01 Pair

**SEWING:**

<b><u>Name Of Machine :</u></b>	<b><u>Quantity :</u></b>
Plain Machine Auto	25 Set
Plain Machine Servo	05 Set
Two Needle	03 Sets
Over Lock ( 5 Thread )	04 Sets
Over Lock ( 4 Thread )	06 Sets
Hole Computerize	01 Set
Button Hole Computerize	01 Set
Button Stitch Computerize	01 Set
Kansai Special	01 Set
Feed Of Arm	02 Sets
Bar Tack Computerize	01 Sets
Snap Button	03 Sets
Chain Stitch	02 Sets
Flat Lock	03 Sets
Slender Bade	01 Set
Vertical Cutter	01 Set
Rib Cutter	01 Set

**FINISHING:**

<b><u>Name Of Machine :</u></b>	<b><u>Quantity :</u></b>
Iron with Vacuum Table	03 Sets
Thread Sucker	01 Sets
Mini Boiler Electric	01 Set



Garments

Hira Bhaban, 2, West Chowdhurypara, Hazipara, Dhaka-1219, Bangladesh  
Tel- 02-9350006 E-mail : [info@outlinebd.com](mailto:info@outlinebd.com)

---

Outline Garments is committed to maintain a Code of Conduct in its work places. Outline Garments has sought to ensure that, all garments are manufactured in very good working conditions with meaningful job and providing all customers with high quality of products.

Our goal is to create and encourage the creation of model facilities. That not only provide good job at fair rates of pay, but also improve the workers health and safety environment, working hours etc. Outline Garments must respect and comply with national and international laws and regulations.

**Child Labour :** Outline Garments policy is to discourage and not to support the use of child labour as defined by local law and ILO convention. Outline Garments does not employ and worker below the age of 18 years old.

**Forced Labour:** Outline Garments does not support the use of forced labour, bonded or involuntary labour, Also Outline Garments does not keep any deposits for employment.

**Harassment & Abuse:** Outline Garments treats employees with respect and dignity. No employee is subjected to any physical, sexual, psychological or verbal harassment and abuse. If any such incident takes place, it is dealt through existing disciplinary practices.

**Discrimination:** Outline Garments projects and promotes the basic human rights of the work force. Outline Garments does not encourage or support discrimination in hiring, compensation, access to training, promotion, termination or recruitment, based on race, caste, gender, sexual orientation, nationality, origin, religion, disability, pregnancy or marital status.

**Wages & Benefits:** Outline Garments that, wages are paid for a standard working month, with meets the legal standards. Outline Garments follows the legally approved grading wage structure for the employee. Minimum wages is Taka 1000/= maintained. Outline Garments is committed to pay all payments regularly in time.

**Working Hours:** Outline Garments complies with the local law and industry week. In case of more than 48 hours work Over Time, it is done with the concern of Workers and is paid at premium rate as per local law. Outline Garments ensures that, over time remains within legal limit, Minimum 01 (One) hour break is given during daily work period. 01 day weekend in every week is mandatory for all employees.

**Environmental:** Outline Garments committed to the environment to meet all applicable environmental local laws in the company and striving hard for a better environment at the factory.



Garments

Hira Bhaban, 2, West Chowdhurypara, Hazipara, Dhaka-1219, Bangladesh

Tel- 02-9350006 E-mail : [info@outlinebd.com](mailto:info@outlinebd.com)

---

**Health & Safety:** Outline Garments provides a safe and healthy working environment to prevent accident and injury to health. We contribute all facilities to the health care needs of the workers. Modern water purification system is in work place to ensure pure drinking water including the provision of normal and cold water. Sufficient first aid boxes are available. Outline Garments does best to have adequate ventilation, lighting, toilets, personal protective equipments, and fire fighting and safety equipments.

Being a professionally managed company, we pay immaculate attention to every detail of the production from Cutting to the finishing of the Garments. Our years of experience and extensive industrial knowledge enables us to comprehend the needs and taste of our clients. We have aggressively invested on our infrastructure and have installed latest machineries. The machineries can handle majority types of product and provide optimum result both in various product range and capacity.

Thanking You.....